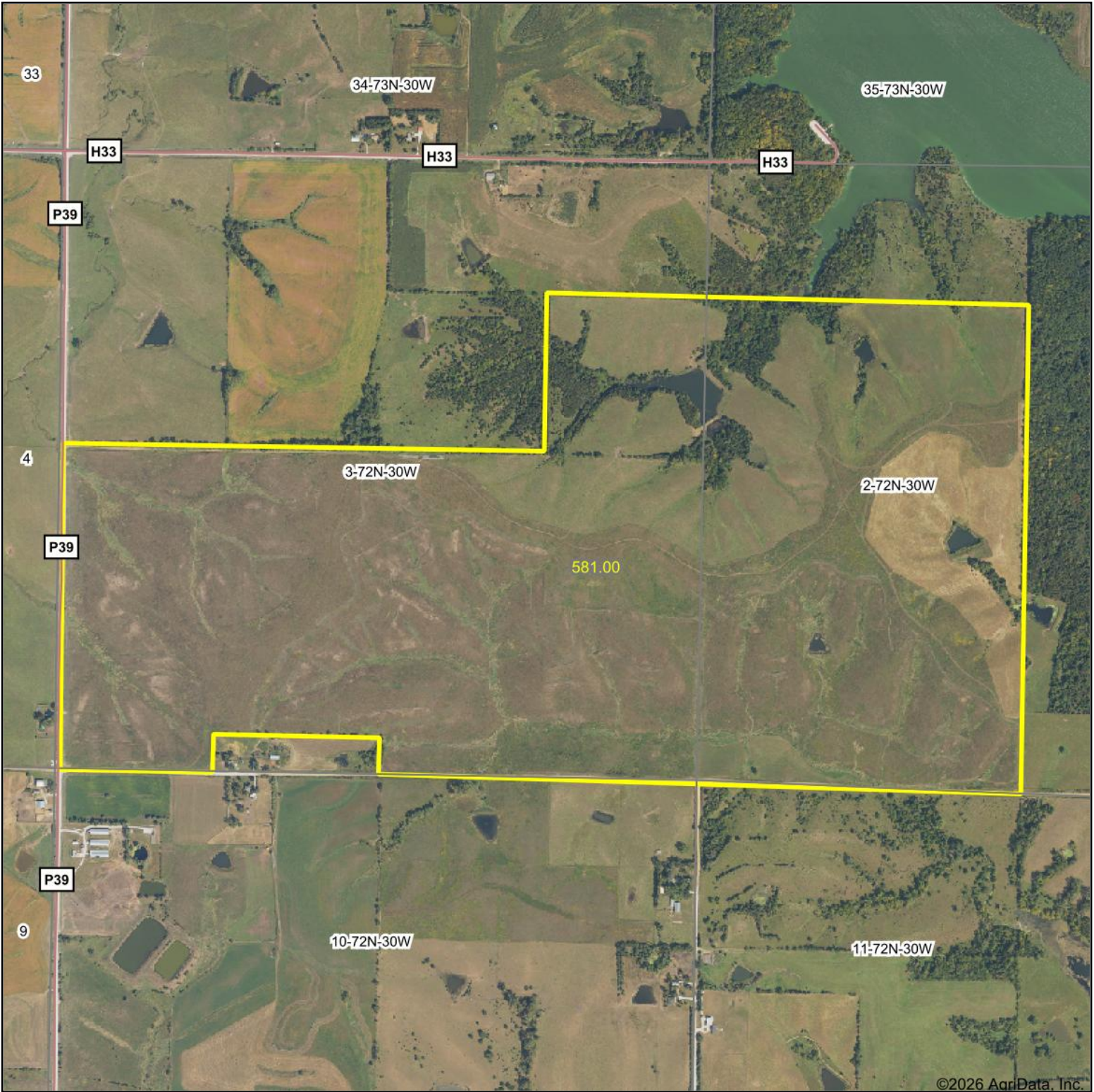


Aerial Map

Boundary Lines Are Approximate



Hawkeye
Real Estate

Boundary Center: 41° 3' 44.69, -94° 17' 5.55



3-72N-30W
Union County
Iowa



Maps Provided By:
 surety
CUSTOMIZED ONLINE MAPPING
© AgriData, Inc. 2025 www.AgriDataInc.com

3/31/2026