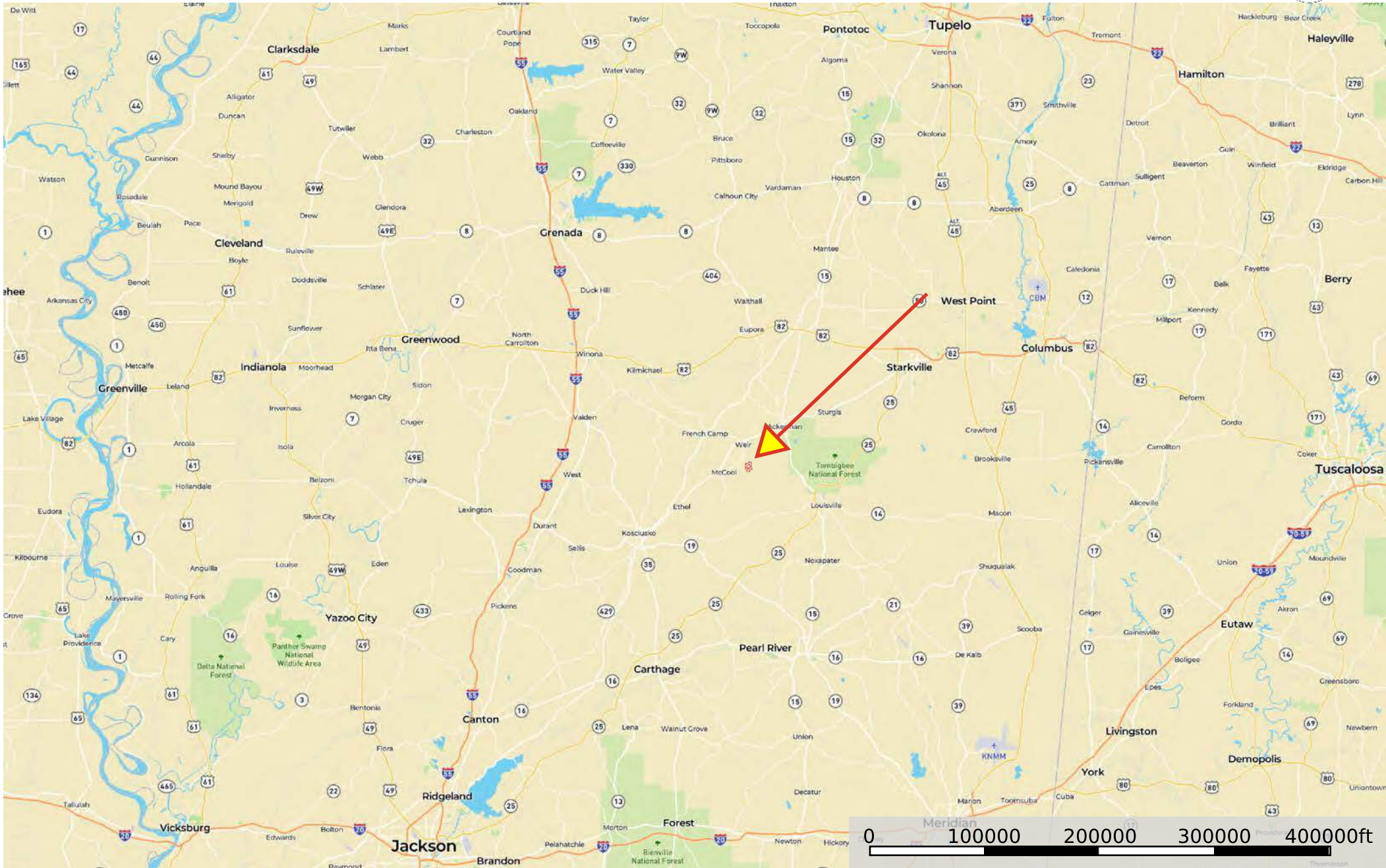


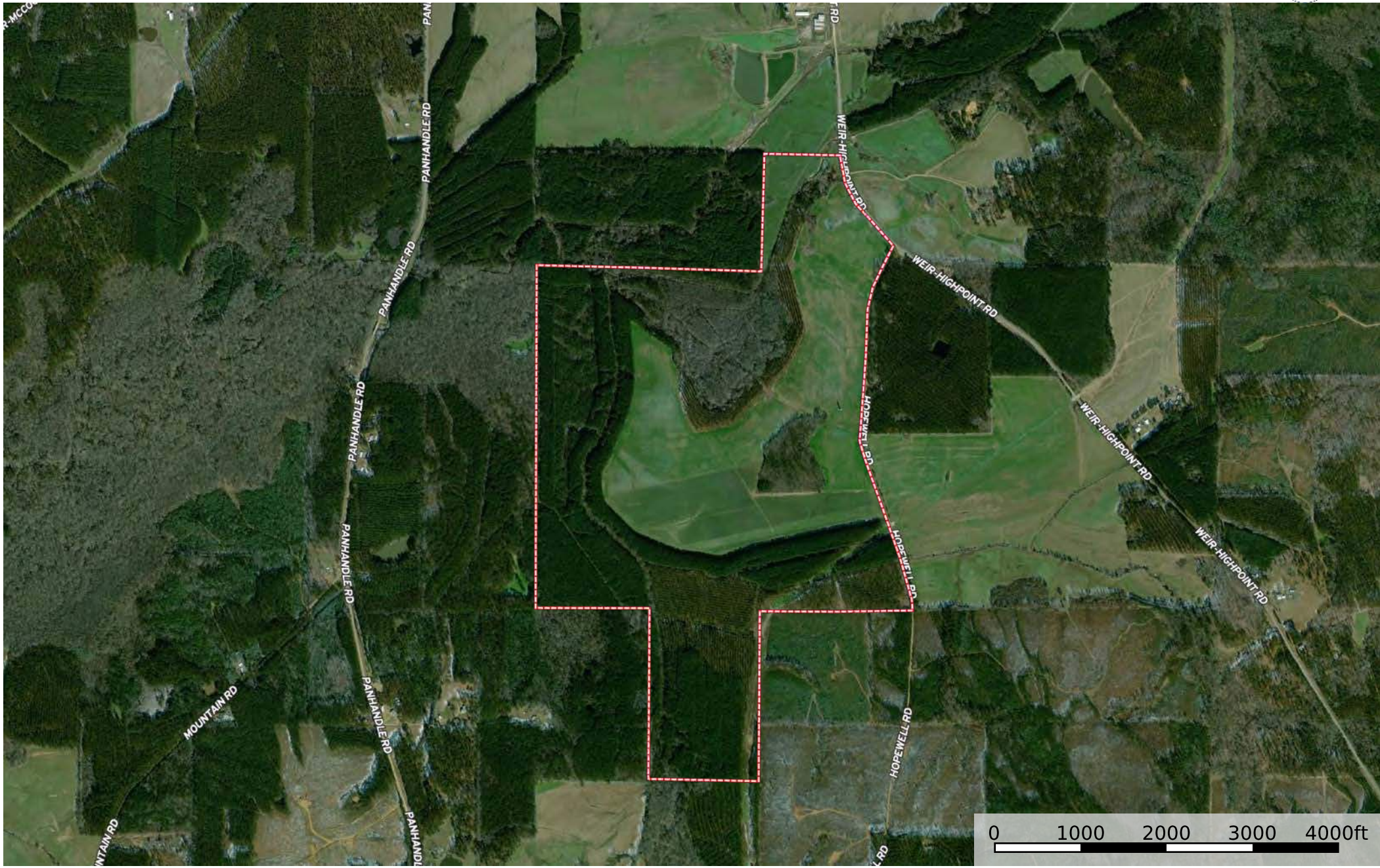
# 455 Acres - Choctaw County MS

Choctaw County, Mississippi, AC +/-



# 455 Acres - Choctaw County MS

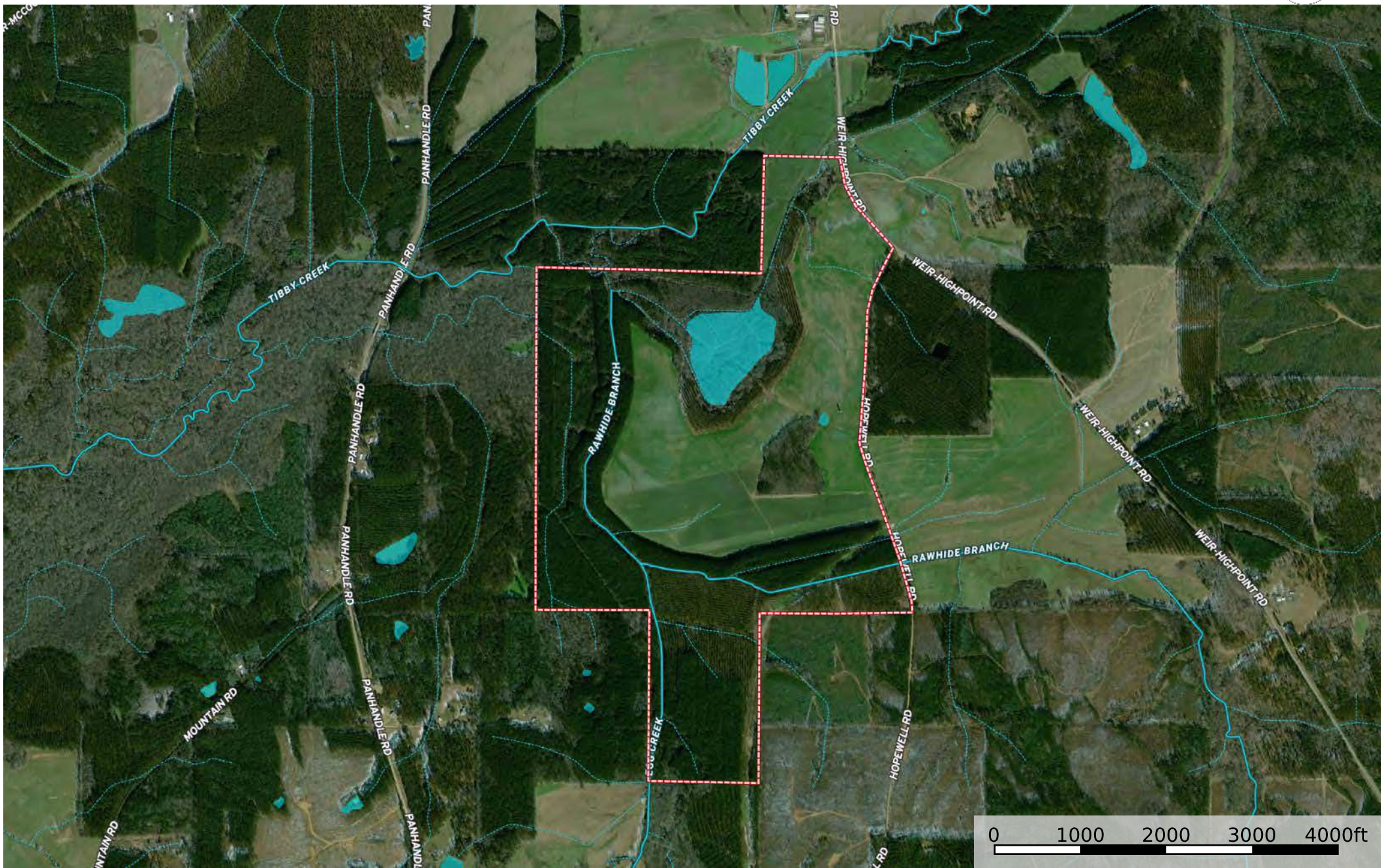
Choctaw County, Mississippi, AC +/-



Boundary

# 455 Acres - Choctaw County MS

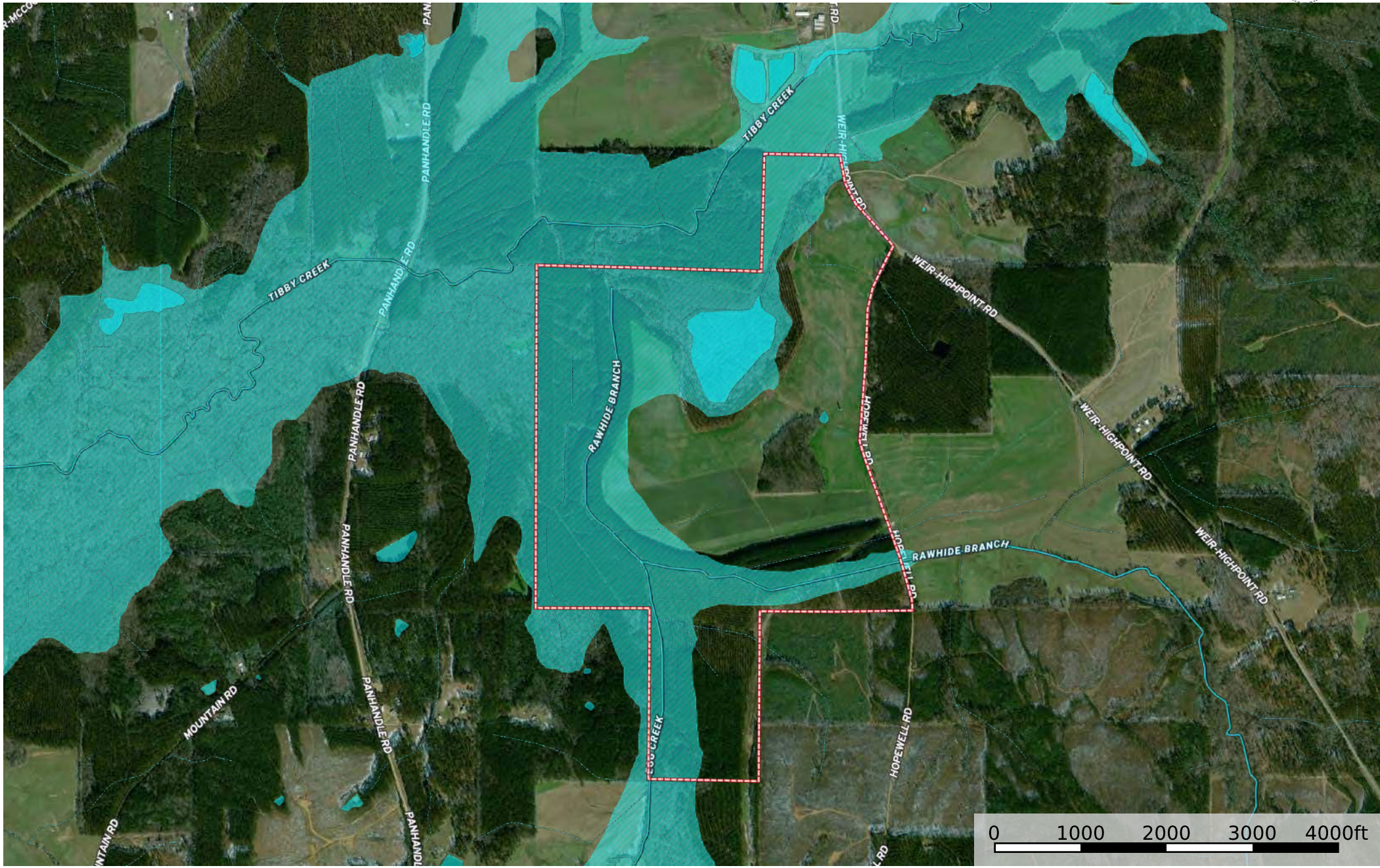
Choctaw County, Mississippi, AC +/-



- Boundary
- Stream, Intermittent
- River/Creek
- Water Body

# 455 Acres - Choctaw County MS

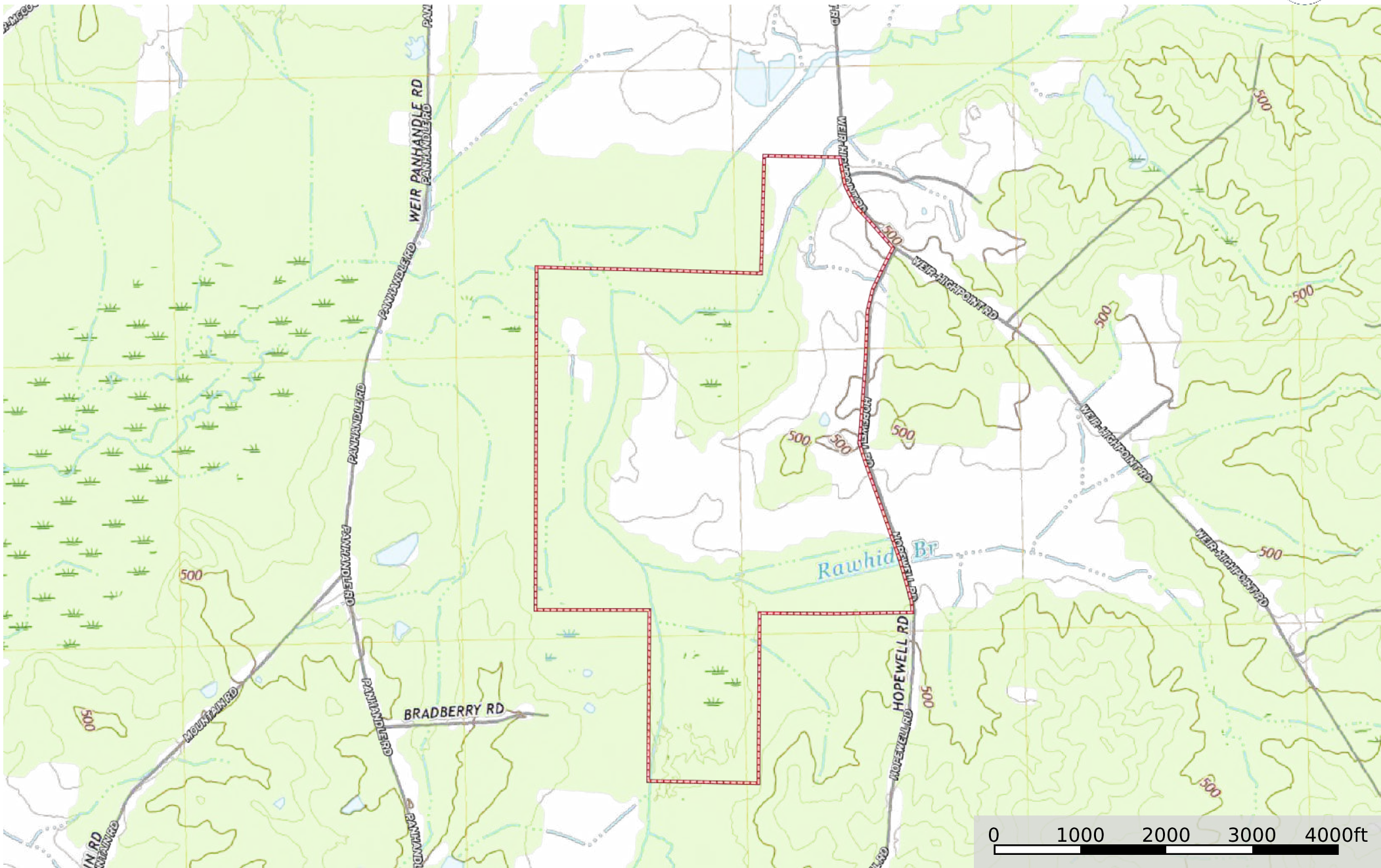
Choctaw County, Mississippi, AC +/-



- Boundary
- 100 Year Floodplain
- 500 Year Floodplain
- Floodway
- Special
- Unmapped/ Not Included
- Stream, Intermittent
- River/Creek
- Water Body

# 455 Acres - Choctaw County MS

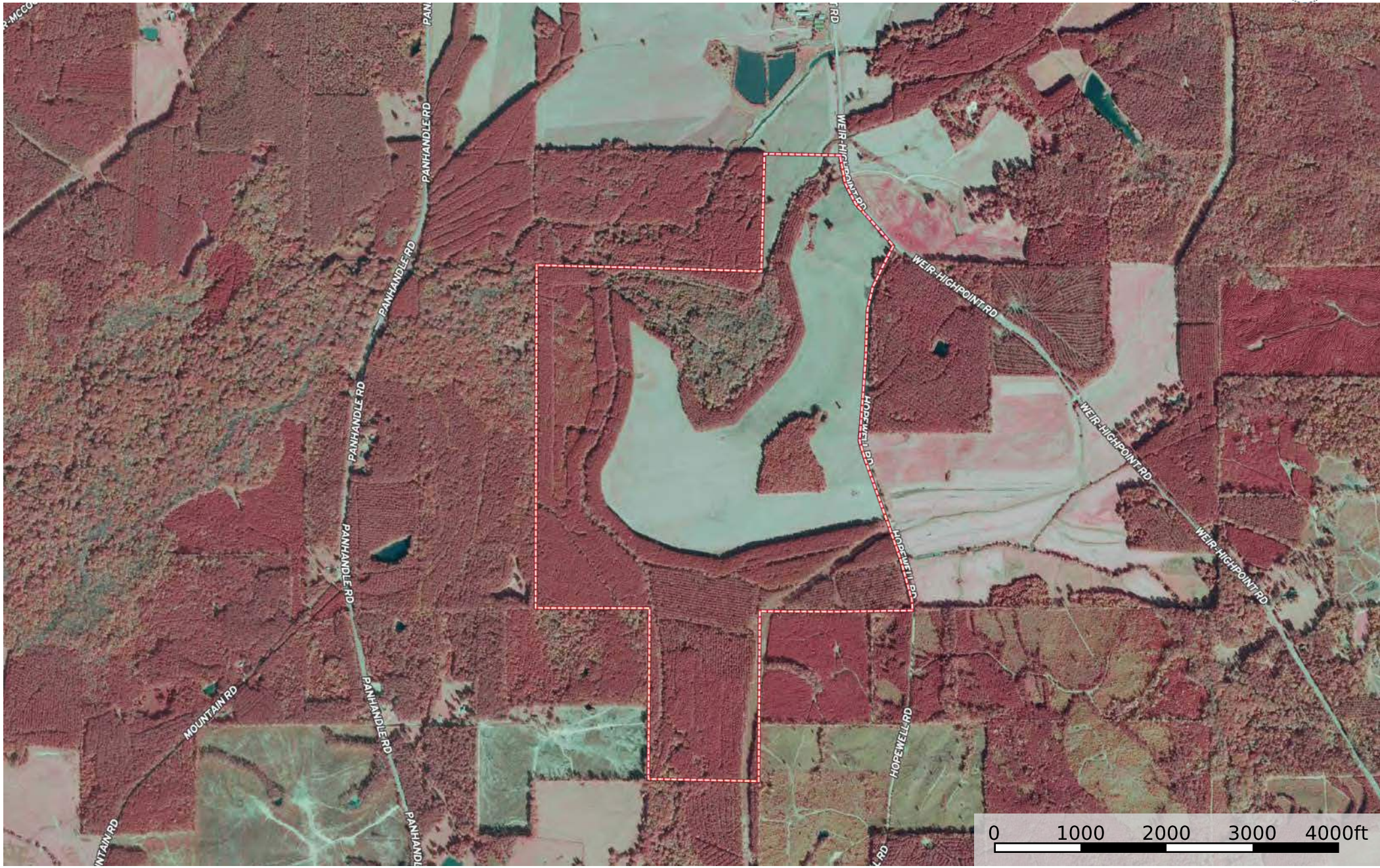
Choctaw County, Mississippi, AC +/-



Boundary

# 455 Acres - Choctaw County MS

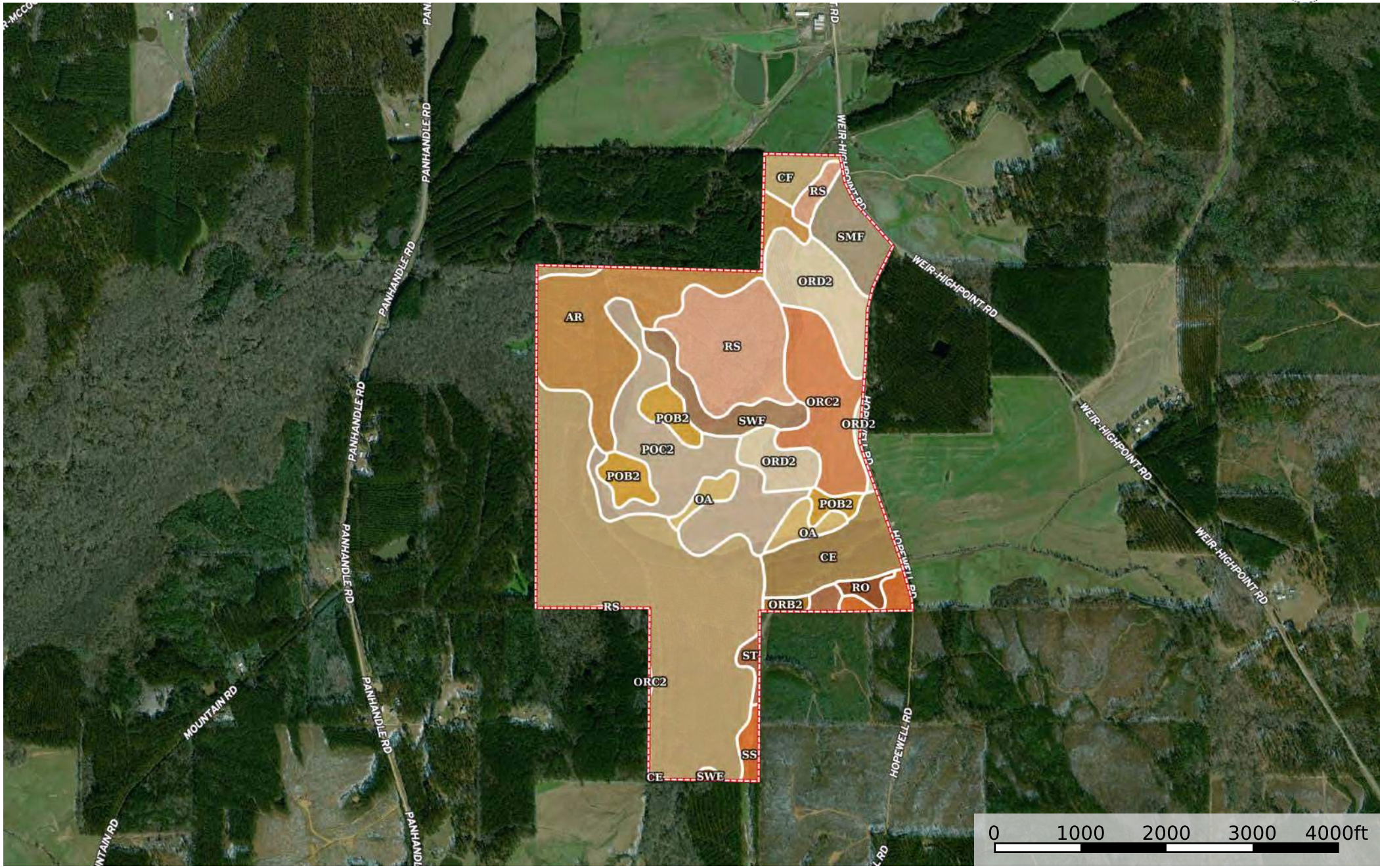
Choctaw County, Mississippi, AC +/-



Boundary

# 455 Acres - Choctaw County MS

Choctaw County, Mississippi, AC +/-



Boundary

 Boundary 456.78 ac

SOIL CODE	SOIL DESCRIPTION	ACRES	%	CPI	NCCPI	CAP
Cf	Chenneby silt loam, frequently flooded	139.88	30.62	0	65	4w
Ar	Arkabutla silt loam, frequently flooded	54.6	11.95	0	18	4w
PoC2	Providence silt loam, 5 to 8 percent slopes, moderately eroded	52.12	11.41	0	32	3e
Rs	Rosebloom silt loam, 0 to 2 percent slopes, frequently flooded	42.38	9.28	0	51	5w
OrD2	Ora loam, 8 to 12 percent slopes, eroded	36.13	7.91	0	37	4e
OrC2	Ora loam, 5 to 8 percent slopes, eroded	31.99	7.0	0	32	3e
Ce	Chenneby silt loam, occasionally flooded	24.72	5.41	0	77	2w
PoB2	Providence silt loam, 2 to 5 percent slopes, moderately eroded	16.5	3.61	0	34	2e
SmF	Smithdale fine sandy loam, 15 to 35 percent slopes	15.4	3.37	0	11	7e
SwF	Sweatman fine sandy loam, 15 to 25 percent slopes	14.43	3.16	0	64	7e
Oa	Oaklimeter silt loam, 0 to 2 percent slopes, occasionally flooded	9.76	2.14	0	65	2w
SS	Smithdale-Sweatman association, hilly	8.17	1.79	0	56	7e
St	Stough fine sandy loam, 0 to 2 percent slopes	4.76	1.04	0	31	2w
Ro	Rosebloom silt loam, occasionally flooded	3.18	0.7	0	77	3w
OrB2	Ora loam, 2 to 5 percent slopes, moderately eroded	2.04	0.45	0	37	2e
SwE	Sweatman fine sandy loam, 8 to 15 percent slopes	0.72	0.16	0	72	6e
TOTALS		456.78(*)	100%	-	46.93	3.9









(\*) Total acres may differ in the second decimal compared to the sum of each acreage soil. This is due to a round error because we only show the acres of each soil with two decimal.

## Capability Legend

Increased Limitations and Hazards

Decreased Adaptability and Freedom of Choice Users

Land, Capability

								
	1	2	3	4	5	6	7	8
'Wild Life'	•	•	•	•	•	•	•	•
Forestry	•	•	•	•	•	•	•	
Limited	•	•	•	•	•	•	•	
Moderate	•	•	•	•	•	•		
Intense	•	•	•	•	•			
Limited	•	•	•	•				
Moderate	•	•	•					
Intense	•	•						
Very Intense	•							

### Grazing Cultivation

(c) climatic limitations (e) susceptibility to erosion

(s) soil limitations within the rooting zone (w) excess of water