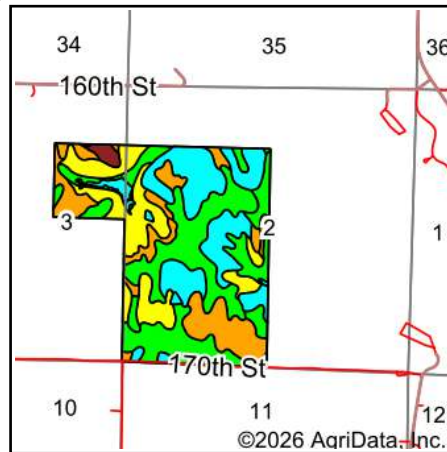
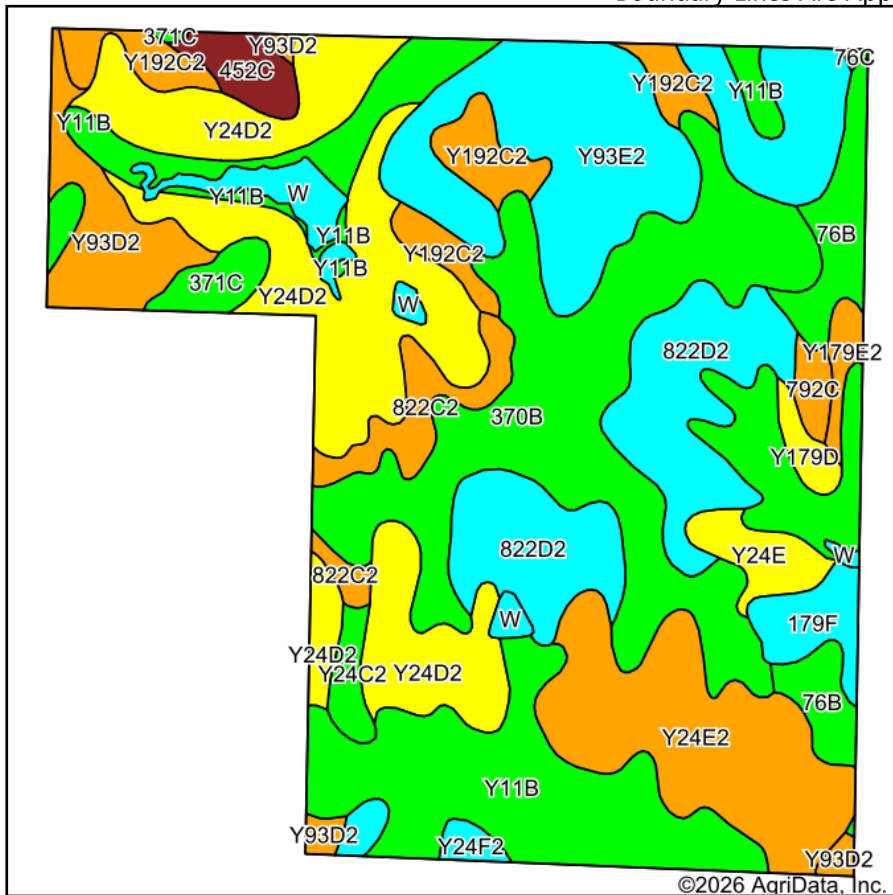


Soils Map

Boundary Lines Are Approximate



State: **Iowa**
 County: **Union**
 Location: **2-72N-30W**
 Township: **Highland**
 Acres: **278**
 Date: **3/31/2026**



**Hawkeye
Real Estate**

Maps Provided By:



Soils data provided by USDA and NRCS.

Area Symbol: IA175, Soil Area Version: 28

Code	Soil Description	Acres	Percent of field	CSR2 Legend	Non-Irr Class *c	CSR2**	CSR	*n NCCPI Corn	*n NCCPI Soybeans
370B	Sharpsburg silty clay loam, 2 to 5 percent slopes	43.66	15.6%		Ile	91	87	92	79
Y11B	Colo, occasionally flooded-Ely silty clay loams, dissected till plain, 2 to 5 percent slopes	43.60	15.7%		llw	80		86	81
Y24D2	Shelby clay loam, dissected till plain, 9 to 14 percent slopes, eroded	42.54	15.3%		llle	49		75	55
Y93E2	Shelby-Adair clay loams, dissected till plain, 14 to 18 percent slopes, eroded	33.05	11.9%		IVe	28		61	43
822D2	Lamoni silty clay loam, 9 to 14 percent slopes, eroded	25.05	9.0%		IVe	10	15	59	42
Y24E2	Shelby clay loam, dissected till plain, 14 to 18 percent slopes, eroded	23.04	8.3%		IVe	35		69	49
Y192C2	Adair clay loam, dissected till plain, 5 to 9 percent slopes, eroded	10.58	3.8%		llle	33		63	46
Y93D2	Shelby-Adair clay loams, dissected till plain, 9 to 14 percent slopes, eroded	10.26	3.7%		llle	35		68	50
76B	Ladoga silt loam, 2 to 5 percent slopes	9.11	3.3%		Ile	86	82	83	77
822C2	Lamoni silty clay loam, 5 to 9 percent slopes, eroded	6.36	2.3%		llle	32	30	61	45
W	Water	5.46	2.0%			0	0		
179F	Gara loam, 18 to 25 percent slopes	4.25	1.5%		Vle	18	15	61	42
371C	Nira-Sharpsburg silty clay loams, 5 to 9 percent slopes	4.12	1.5%		llle	88	69	92	79
Y24E	Shelby loam, dissected till plain, 14 to 18 percent slopes	3.93	1.4%		IVe	41		75	56

Soils data provided by USDA and NRCS.



Code	Soil Description	Acres	Percent of field	CSR2 Legend	Non-Irr Class *c	CSR2**	CSR	*n NCCPI Corn	*n NCCPI Soybeans	
452C	Lineville silt loam, 5 to 9 percent slopes	3.41	1.2%		IIIe	57	36	89	74	
Y24C2	Shelby clay loam, dissected till plain, 5 to 9 percent slopes, eroded	2.18	0.8%		IIIe	73		77	58	
Y24F2	Shelby clay loam, dissected till plain, 18 to 25 percent slopes, eroded	2.13	0.8%		VIe	20		54	36	
Y179E2	Gara loam, dissected till plain, 14 to 18 percent slopes, eroded	1.74	0.6%		VIe	32		70	49	
Y179D	Gara loam, dissected till plain, 9 to 14 percent slopes	1.72	0.6%		IVe	49		84	64	
792C	Armstrong loam, 5 to 9 percent slopes	1.62	0.6%		IIIe	37	31	75	57	
76C	Ladoga silt loam, dissected till plain, 5 to 9 percent slopes	0.19	0.1%		IIIe	80	67	81	74	
Weighted Average						*-	51.9	*-	*n 73.6	*n 59

**IA has updated the CSR values for each county to CSR2.

*- CSR weighted average cannot be calculated on the current soils data, use prior data version for csr values.

*n: The aggregation method is "Weighted Average using all components"

*c: Using Capabilities Class Dominant Condition Aggregation Method

*- Non Irr Class weighted average cannot be calculated on the current soils data due to missing data.