



Mary Claire Whetstone  
 REALTOR®  
 mcwhetstone@yahoo.com  
 Office: (601) 250-0017  
 Cell: (601) 807-7733  
 SouthernStatesRealty.com



# Southern States Realty

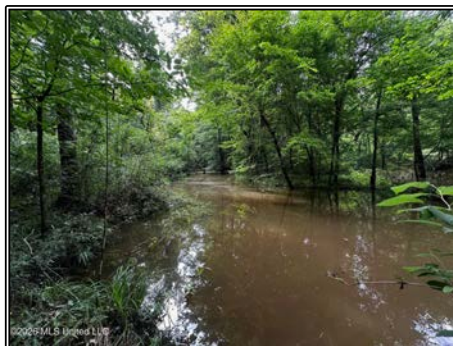
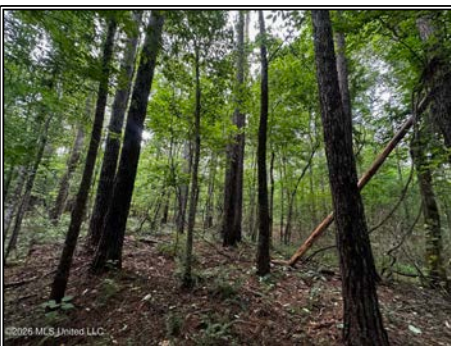
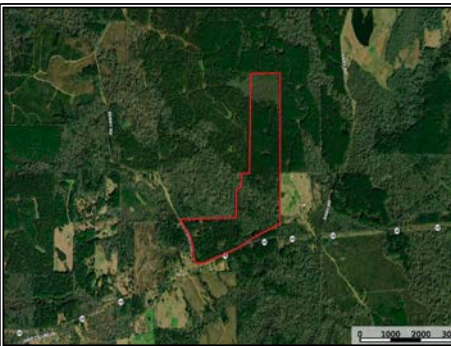


Discover the perfect combination of recreational, residential, and investment potential with this ±155 acre tract located directly off Highway 48 and Perry Road, just 4 miles outside of Centreville, Mississippi. With direct road frontage and access from both Highway 48 and Perry Road, this property offers exceptional convenience and usability. A well-established internal road system provides easy access throughout the tract by ATV or side-by-side. The property features a diverse mix of hardwood timber of varying ages, offering both scenic beauty and potential long-term timber value. Multiple creeks, sloughs, and natural water sources traverse the property, creating excellent wildlife habitat and year-round water availability. Known for its abundant deer and turkey population, this tract offers outstanding hunting opportunities with existing hunting locations and numerous areas suitable for additional food plots and stand sites. The combination of timber, natural water sources, and established access makes this a premier recreational property. Water and electricity are available making the property equally suited for a future homesite, hunting camp, weekend retreat, or family legacy property. This rare tract offers the privacy, accessibility, and natural features that outdoor enthusiasts are looking for. Schedule your showing today.

©2026 MLS United LLC

Highway 48, Gloster, MS

31.103077, -90.983650 GPS



767,000

155± Acres  
 MLS #4152124

